

DC HIGH VOLTAGE EV RELAY

EVR150

◎ **Application (응용분야)** : Electric Vehicle, Charging System, Battery Energy Storage System, Solar System, Golf Car, Fuel Cell Vehicle, etc.

◎ **Magnet coil ratings (코일정격)**

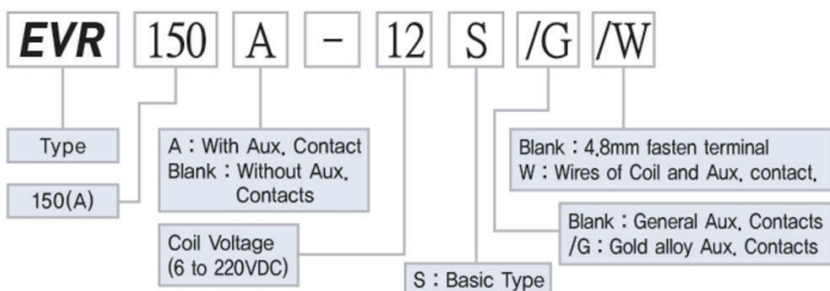
Nominal voltage (V)	Item	Nominal current (mA)	Coil resistance (Ω)	Pick-up voltage (V) max.	Drop-out voltage (V) min.	Max. voltage (V)	Coil power (W) dissipation
DC	220	27	8,600	75%	10%	130%	5.2 to 5.9
	110	52	2,100				
	72	83	870				
	60	95	630				
	48	117	410				
	36	156	230				
	24	245	110				
	12	480	25				
	6	952	6.3				

Notes : 1. Nominal current and coil resistance are measured at ±20°C. 2. Differences of coil resistance are ±10%. 3. Performance characteristic coil temperature is measured at ±20°C.

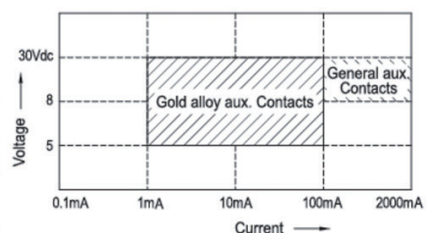
◎ **Contact ratings (접점정격)**

Item	Type	1 Pole Resistor load
		EVR150
Max. Continuous current (wire size 50mm ²)		170A
Max. switching current		150A
Max. switching voltages		1200VDC 30A
Contact rating switching voltages		12 to 1200VDC
Max. cut-off current		300VDC 1000A 3 Ops
Voltage drop across contacts per 100A		30mV Max. (At 5VDC)
Min. permissible load		12VDC 0.5A
Description		S.P On/Off (a)
Contact Arrangement, auxiliary contacts		1Form A (SPST-NO.)
General Aux, Contact Current, Max.		2A 30VDC / 3A 125VAC
General Aux, Contact Current, Min.		100mA 8VDC
Gold alloy Aux, Contacts Max.		0.1A 30VDC / 0.1A 30VAC
Gold alloy Aux, Contacts Min.		1mA 5VDC / 1mA 5VAC

◎ **Ordering information (주문방법)**



Permissible load of Aux. contact





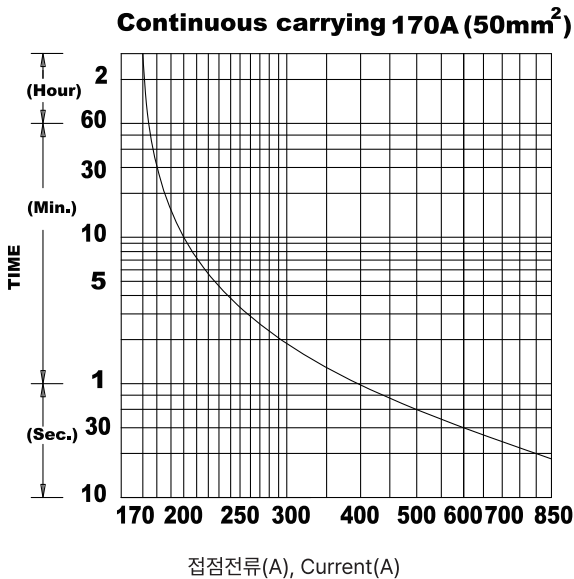
⊙ Characteristics (성능)

Expected life	Mechanical (Min.)		2×10^6
	Electric (Min.) (Resistor)	450VDC 250A	1×10^4
		750VDC 250A	1×10^5
Initial insulation resistance			Min. 100MΩ 500VDC
Initial breakdown voltage	Between open contacts		3500VAC 60 Sec. 10mA
	Between contacts & coil		3500VAC 60 Sec. 10mA
Operate time (at 20°C)			Max. 20ms
Release time (at 20°C)			Max. 5ms
Shock resistance	Functional		Min. 147 m/s ² {15G}
	Destructive		Min. 490 m/s ² {50G}
Vibration resistance	Functional		98 m/s ² {10G} 10 to 500Hz
	Destructive		98 m/s ² {10G} 10 to 500Hz
Conditions for operation transport and storage	Ambient temperature		-40°C to +85°C
	Humidity		5 to 85% R.H.
Unit weight			300g

⊙ Reference data (특성곡선)

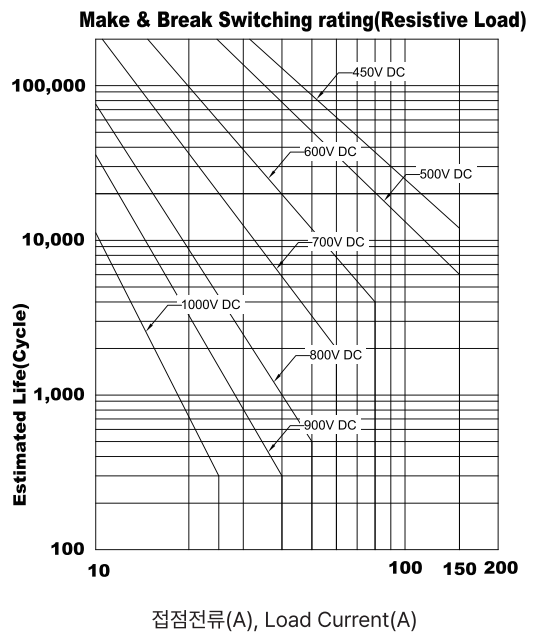
온도상승곡선

- 통전시간의 최대치 Max. Current capacity
- Max. Continuous thermal current rating (amperes)



전기적 수명 곡선

(Estimated Switching Ratings)



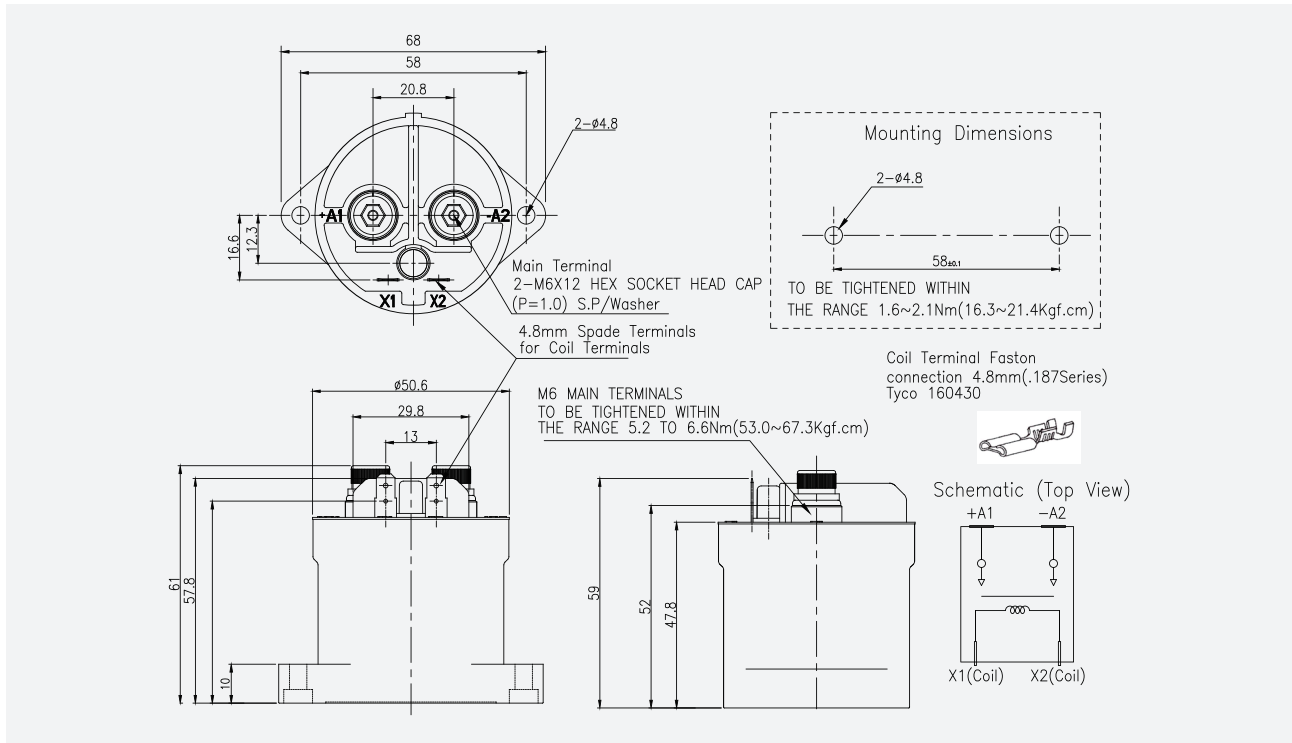
DC HIGH VOLTAGE EV RELAY

EVR150



Dimension in mm (외형치수도)

Tolerance(공차) : 10mm 이하±0.3, 10~50mm ±0.6, 50mm 이상±1.0



(Aux Type)

